



Healing Hearts Through the Arts 70th Anniversary Student Art Exhibit, at the Christina Cultural Arts Center.



ART LOOP WILMINGTON
FRIDAY, AUGUST 4
5 - 9 p.m.
artloopwilm.org



ART LOOP WILMINGTON

FRIDAY, AUGUST 4
5 - 9 p.m.



cityfestwilm.com/artloopwilmington



Chris White Gallery
701 N. Shipley Street
Wilmington, DE
chriswhitegallery.com



BODY, Bryan DeProspero. Landscape paintings made inside are a hermit's idea of the outdoors. Art loop reception 5:30 – 8:00 PM. On view through August 28th.



The Delaware Contemporary
200 S. Madison Street
Wilmington, DE
www.decontemporary.org



Spiral, Recoil, curated by Kayleigh Bryant-Greenwell, engages with a legacy of Black art spanning over fifty years through ten exciting contemporary visionaries. Includes opening receptions for studio artists Lynda Johnson and Verna Hart. Panel discussion, readings, and a fiber art activity. Art loop reception 5 – 9 PM. On view Sun, Tue 12 – 5 PM; Wed 12 -7 PM; Thu, Fri, Sat 10 Am – 5 PM through August.



Artist Ave Station
800 N. Tatnall Street
Wilmington, DE
www.artistavestation.com



Life. Photographs on display from Scranton based photographer, Matt Montella and Wilmington based photographer, Ariel Ramirez. Art loop reception 5:30 – 8:30 PM. On view through April 28th.



ArtzScape
205 N. Market Street
Wilmington, DE
www.artzscape.com



Too Far From the Tree, Shannon Arianna - Shannon retracts difficult hurdles, making each painting represent a significant standpoint in her life. Art loop reception 5 – 9 PM. On view Sun, Tue 12 – 5 PM; Wed 12 -7 PM; Thu, Fri, Sat 10 Am – 5 PM through August 31st.



Mezzanine Gallery
820 N. French Street
Wilmington, DE
www.artsdel.org



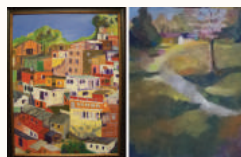
Recent Landscapes, Meinrad Leckie, The Delaware Division of the Arts is pleased to present a selection of new oil landscapes by Meinrad Leckie. Art loop reception 5 – 7 PM. On view 8:30 AM – 4:30 PM through August 25th.



Zaikka Indian Grill
209 N. Market Street
Wilmington, DE
www.zaikka.com



I Have Arrived At This Moment (Warm Winter, Bitter Spring, Terron Mitchell. Terron Mitchell displays work of victory flag placed in the ground at the peak of Mt. Fine Arts. The body of work represents all the artist has learned and experienced in his 15+ years of wood crafting. Art loop reception 5 – 8 PM. Tuesday – Saturday 11 AM - 4 PM through March 31st.



St. Stephen's Lutheran Church
1301 N. Broom Street
Wilmington, DE
www.ststeph.org



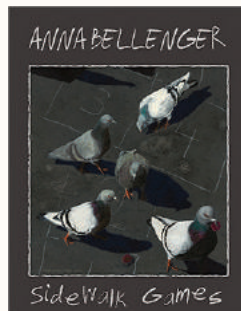
Bonita Frawley, a Wilmington, DE artist, paints in oils on canvas and gesso board. She uses 10 colors in a search for light, reflection and color. A Moment in Time by Linda Gunderson. Each painting is an expression of a moment experience. Paintings include images from Italy, the Midwest, Arizona and Maryland/Delaware. Art Loop reception 5:30-7:30 pm. On view 8:30 – 12:30 PM through August 31st.



LOMA Coffee
239 N. Market Street
Wilmington, DE
www.lomacoffee.com



Expressions, Elena Olshin. Inspired by life and film, this mixed media collection features portraits, landscapes, still life, and dancers. Art loop reception 5:30 – 9 PM. On view 6 AM – 5 PM. (Mon – Fri) 7 AM – 2 PM (Sat) through August 31st.



Howard Pyle Studio
1305 N. Franklin Street
Wilmington, DE
www.howardpylestudio.org



Paintings done by Studio member, Anna Bellenger. All the paintings are of GAMES, most on sidewalks (some lawn and sand). It's mostly a party! Reception 5:00 – 8:00 PM. On view by appointment after August 18th. To schedule a private tour of the Studios, where Howard Pyle painted, wrote, and taught from 1883-1911, call 302.656.7304.